

Lenovo Chromebook Duet EDU G2

Powered by

**MediaTek
Kompanio**



MediaTek powered Chromebooks for increased productivity, engagement and collaboration

MediaTek works closely with Google and device manufacturers to bring great Chromebook designs to market powered by our incredible processors. One such device is the Lenovo Chromebook EDU G2.

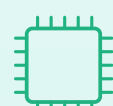
The **Lenovo Chromebook Duet EDU G2** is powered by the **MediaTek Kompanio 838 processor** and offers **enhanced performance over the prior gen by 30%**. The Lenovo Chromebook Duet EDU G2 takes durability to the next level with a rugged case and detachable keyboard. The Lenovo Chromebook Duet EDU G2 features a **2K display**, **5MP front/8MP rear cameras**, **dual USB-C ports**, as well as an **optional stylus**. It truly offers students **tremendous flexibility** to learn anywhere and teachers a very flexible and adaptable primary or secondary device.



2K Display



5MP Front / 8MP Rear Cameras



838 Processor



USB-C Ports



Rugged

We love this device and can talk at length about how great it is, but we wanted to share some feedback directly in the words of customers. We recently had two customers use the device in their school and district and share their thoughts with us.



“I had teachers in grades 2 and 6 test the Lenovo Duet device, and both loved the ease of use, the pen, and the portability of the device, especially the ability to screencast and move around the room while teaching.”

“I also personally tested the Lenovo Duet and found the build quality very nice. The kickstand works excellent and can be used in both **portrait and landscape mode** providing **great flexibility**. The **front facing camera is superb making it excellent for video calls** and the **rear camera is great for making videos**. With the **long battery life and multitasking speed**, this would be an excellent device for teachers who do not want a traditional computer as an iPad alternative.”


*Rachel Gerwin, College and Career Readiness Coordinator/IT
L. Hollingworth School for the Talented and Gifted*


Powered by


MediaTek Kompanio




“As a self-maintainer district NRCS has trained students who help support and maintain their fleet of Chromebooks. These same students also provide testing input for new devices or ones in consideration for future purchase. In the case of Lenovo Duet, we had students use it and provide some initial input...

- 

Great size and light weight
- 

Digital note-taking ability (less notebooks to carry + saves on paper)
- 

Can help bridge students transition from an iPad to Chromebook
- 

Nice front camera including a sliding privacy cover

Paul Hieronymus, Director of Information, Technology & Integration
North Ridgeville City Schools



About L. Hollingworth School for The Talented and Gifted

The L. Hollingworth School for the Talented and Gifted serves students from pre-kindergarten through 8th grade. They promote academic excellence and provide students with a viable educational alternative that fosters an academically challenging environment focused on the learner’s needs. With this in mind, at L. Hollingworth School for the Talented and Gifted, our mission is to guide ALL students to develop character and maximize their full intellectual potential by empowering them to use their unique gifts and talents. This will lead to academic excellence and a new generation of high-character, contributing members of a global society.



About North Ridgeville City Schools

The North Ridgeville City School District is Ranger STRONG. Ranger STRONG is a district-wide initiative that places an emphasis on the whole child, not just the academic goals of the school. It encourages students to develop the skills to become caring and productive members of their school, community, country, and the world. Ranger STRONG develops the whole student by promoting student leadership by focusing on the attributes of service, teamwork, respect, ownership, necessity, and goals. We believe every student has the ability to make a positive difference. Ranger STRONG is built on collaboration between the North Ridgeville City School District and the North Ridgeville community by working towards a stronger, more unified community to tear down the walls of intolerance, injustice, prejudice, and discrimination.

